

CONTACT INFORMATION

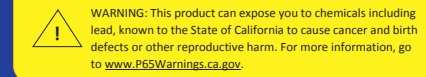
- Website: www.supermicro.com
- General Information: marketing@supermicro.com
- Technical Support: support@supermicro.com
- Phone: +1 (408) 503-8000, Fax: +1 (408) 503-8008

FOR YOUR SYSTEM TO WORK PROPERLY, PLEASE DOWNLOAD APPROPRIATE

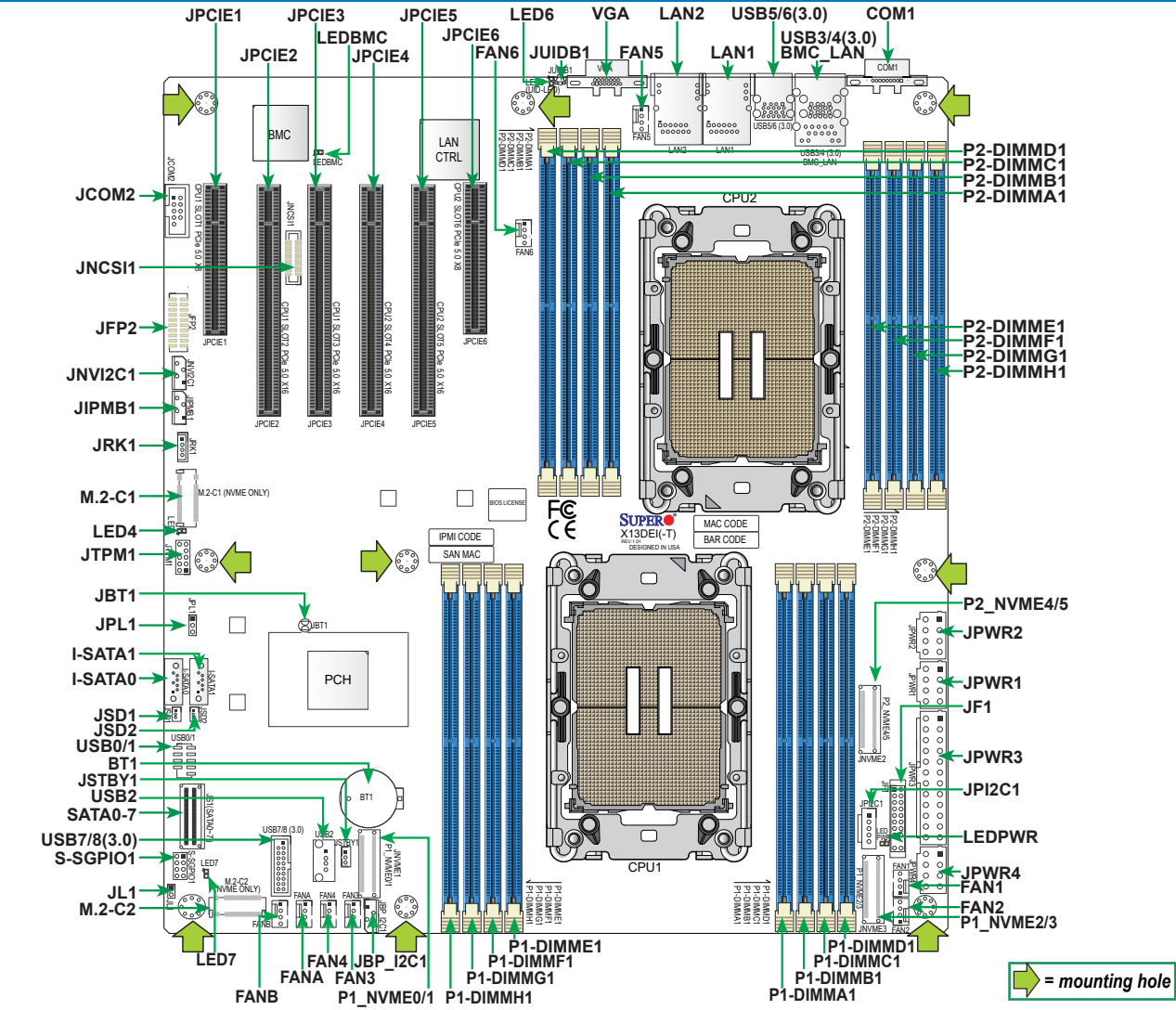
- DRIVERS/IMAGES/USER'S MANUAL FROM THE LINKS BELOW:**
- Manuals: <https://www.supermicro.com/support/manuals>
- Drivers & Utilities: <https://www.supermicro.com/wdl/driver>
- Safety: https://www.supermicro.com/about/policies/safety_information.cfm

PACKAGE CONTENTS

- One Supermicro Motherboard
- One I/O Shield (MCP-260-00042-3N)
- Two SATA Cables (CBL-0044L)
- One Quick Reference Guide (MNL-2509-QRG)
- Two E1A Carriers for XCC CPU (SKT-1333L-0000-FXC)
- Two E1B Carriers for MCC CPU (SKT-1424L-001B-LTS)



Motherboard Layout and Features



Connectors

Connector	Description
BT1	Onboard CMOS Battery
BMC_LAN	Dedicated BMC LAN Port
COM1	Rear I/O COM Port
FAN1 – FAN6, FANA, FANB	CPU/System Fan Headers
I-SATA0, I-SATA1	Intel PCH Powered I-SATA 3.0 Ports with support of SuperDOM devices (*DOM: Disk on Module)
JBP_I2C1	4-pin BMC External I ² C Header (for backplane firmware update if MCIO is not connected to the backplane)
JCOM2	Front Accessible COM Port Header
JF1	Front Control Panel Header
JFP2	Front Accessible VGA Connection Header
JIPMB1	4-pin BMC External I ² C Header (for Inlet Temperature Sensor)
JL1	Chassis Intrusion Header
JNCSI1	NC-SI (Network Controller Sideband Interface) Connector
JNV12C1	NVMe SMBus I ² C Header with hot-plug support
JPCIE1 (SLOT1), JPCIE6 (SLOT6)	PCIe 5.0 x8 Slots (SLOT1: supported by CPU1, SLOT6: supported by CPU2)
JPCIE2/3 (SLOT2/3), JPCIE4/5 (SLOT4/5)	PCIe 5.0 x16 Slots (SLOT2/3: supported by CPU1, SLOT4/5: supported by CPU2)
JPI2C1	Power System Management Bus (SMBus) I ² C Header
JPWR1, JPWR2, JPWR4	8-pin Power Connectors
JPWR3	24-pin ATX Power Connector
JRK1	Intel VROC Key Header for NVMe RAID support
JS1 (SATA 0 – SATA7)	SlimSAS x8 Connector with support of eight Intel PCH SATA 3.0 connections (RAID 0, 1, 5, and 10 supported)
JSD1, JSD2	SATA DOM Power Connectors
JSTBY1	5 V Standby Power Header
JTPM1	Trusted Platform Module/Port 80 Header
JUIDB1	Unit Identifier (UID) Switch / BMC Reset Button
LAN1, LAN2	Ethernet LAN (RJ45) Port 1 and Port 2 (1G LAN support on X13DEI and 10G LAN support on X13DEI-T)
M.2-C1, M.2-C2	PCIe 4.0 x2 NVMe M.2 Slots supported by CPU1 (with support of M-Key 2280 and 22110)
P1_NVME0/1 (JNVME1), P1_NVME2/3 (JNVME2)	MCIO x8 Connectors supported by CPU1 with four PCIe 5.0 x4 NVMe connections
P2_NVME4/5 (JNVME3)	MCIO x8 Connector supported by CPU2 with two PCIe 5.0 x4 NVMe connections
S-SGPIO1	Serial General Purpose I/O Header (for I-SATA0/1 SuperDOM support)
USB0/1	USB 2.0 Header with support of two USB connections
USB2	Internal USB 2.0 Vertical Type-A Connector
USB3/4 (3.0)	Back Panel USB 3.0 Ports (5Gbps, Type-A)
USB5/6 (3.0)	Back Panel USB 3.0 Ports (5Gbps, Type-A)
USB7/8 (3.0)	USB 3.0 Header with support of two USB connections
VGA	Rear I/O VGA Port

Jumpers and LED Indicators

Jumper	Description	Default Setting
JBT1	CMOS Clear	Open (Normal)
JPL1	LAN1, LAN2 Enable/Disable	Pins 1-2 (Enabled)
LED	Description	Status
LED4, LED7	M.2 LEDs	Blinking Green: Device Working
LED6	Unit Identifier (UID) LED	Solid Blue: Unit Identified
LEDBMC	BMC Heartbeat LED	Blinking Green: BMC Normal (Active), Solid Green: (During BMC Reset or during a Cold Reboot)
LEDPWR	Power LED	LED On: Onboard Power On

CPU Support

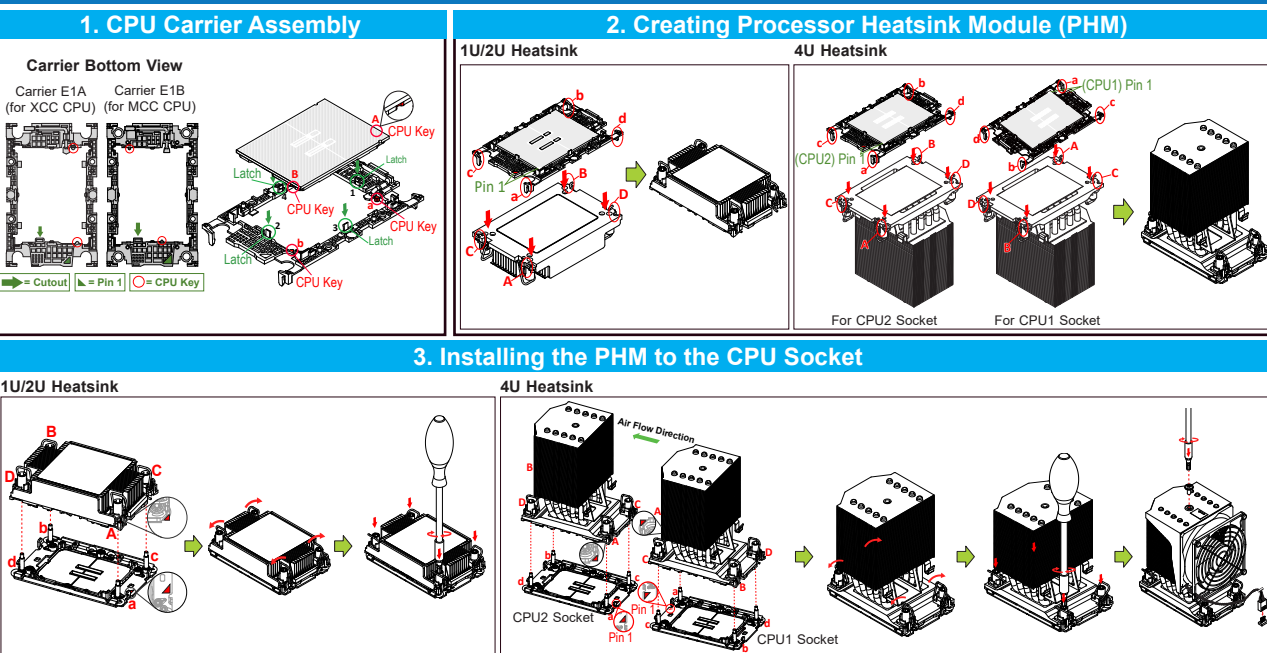
This motherboard supports dual 5th/4th Generation Intel® Xeon® Scalable Family Processors (in Socket E LGA4677) with up to 64/60 CPU cores.

Memory Support

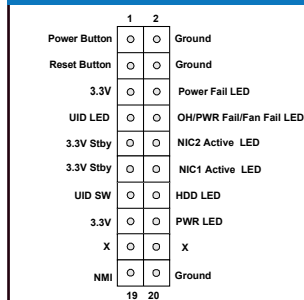
This motherboard supports up to 4 TB memory capacity with 16 DIMMs of 256GB 3DS RDIMM/RDIMM DDR5 ECC memory.

DDR5 Memory Population Table for X13Dxx 16-DIMM Motherboards	
1 CPU	Memory Population Sequence
1 CPU & 1 DIMM	P1-DIMMA1 or P1-DIMME1 or P1-DIMMB1 or P1-DIMMF1
1 CPU & 2 DIMMs	P1-DIMMA1 / P1-DIMMG1 or P1-DIMMC1 / P1-DIMME1
1 CPU & 4 DIMMs	P1-DIMMA1 / P1-DIMMC1 / P1-DIMME1 / P1-DIMMG1
1 CPU & 6 DIMM	P1-DIMMA1 / P1-DIMMC1 / P1-DIMMD1 / P1-DIMME1 / P1-DIMMF1 / P1-DIMMG1 or P1-DIMMA1 / P1-DIMMB1 / P1-DIMMC1 / P1-DIMME1 / P1-DIMMG1 / P1-DIMMH1 or P1-DIMMA1 / P1-DIMMB1 / P1-DIMMD1 / P1-DIMMF1 / P1-DIMMG1 / P1-DIMMH1
1 CPU & 8 DIMMs	P1-DIMMA1 / P1-DIMMB1 / P1-DIMMC1 / P1-DIMMD1 / P1-DIMME1 / P1-DIMMF1 / P1-DIMMG1 / P1-DIMMH1
2 CPUs (Recommended)	Memory Population Sequence
2 CPUs & 2 DIMMs	CPU1: P1-DIMMA1, CPU2: P2-DIMMA1 or CPU1: P1-DIMME1, CPU2: P2-DIMME1 or CPU1: P1-DIMMB1, CPU2: P2-DIMMB1 or CPU1: P1-DIMMF1, CPU2: P2-DIMMF1
2 CPUs & 4 DIMMs	CPU1: P1-DIMMA1 / P1-DIMMG1, CPU2: P2-DIMMA1 / P2-DIMMG1 or CPU1: P1-DIMMC1 / P1-DIMME1, CPU2: P2-DIMMC1 / P2-DIMME1
2 CPUs & 8 DIMMs	CPU1: P1-DIMMA1 / P1-DIMMC1 / P1-DIMME1 / P1-DIMMG1 CPU2: P2-DIMMA1 / P2-DIMMC1 / P2-DIMME1 / P2-DIMMG1
2 CPUs & 12 DIMMs	CPU1: P1-DIMMA1/P1-DIMMB1/P1-DIMMC1/P1-DIMME1/P1-DIMMF1/P1-DIMMG1/P1-DIMMH1 CPU2: P2-DIMMA1/P2-DIMMB1/P2-DIMMC1/P2-DIMME1/P2-DIMMF1/P2-DIMMG1/P2-DIMMH1
2 CPUs & 16 DIMMs	CPU1: P1-DIMMA1/P1-DIMMB1/P1-DIMMC1/P1-DIMMD1/P1-DIMME1/P1-DIMMF1/P1-DIMMG1/P1-DIMMH1 CPU2: P2-DIMMA1/P2-DIMMB1/P2-DIMMC1/P2-DIMMD1/P2-DIMME1/P2-DIMMF1/P2-DIMMG1/P2-DIMMH1

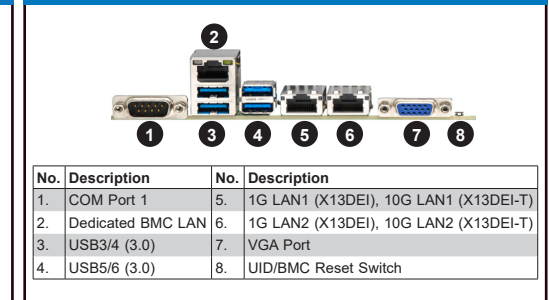
CPU/Heatsink Installation



Front Control Panel



Rear I/O Connectors



Note 1: Refer to Chapter 2 of the user's manual for CPU/Heatsink and memory installation instructions. Please also visit our website at www.supermicro.com for CPU/Memory support updates.
Note 2: All graphics shown in this quick reference guide (QRG) are for illustration only. Your components may or may not look the same as the graphics shown in this QRG.